

ONIX

VERTICAL MULTI-DECK



Kaplanlar



ONIX

VERTICAL MULTI-DECK





Benefits & Specifications:

- User-friendly
- Simplified maintenance
- Easy access and ergonomic design
- Designed for modular configurations
- Large display area
- Easily adapted to retrofit projects

Dimensions (mm):

Height : 2050 / 2200

Length : 1250 / 1875 / 2136 (HC) / 2500 / 2812,5 / 3125 / 3750

Depth : 950 / 1020 / 1120

SYSTEM	OPERATING TEMP. °C	REFRIGERANT
REMOTE	-1 / +1 +2 / +4 +4 / +6	HFC blend HFC/HFO blend CO ₂ GLYCOL/WATER

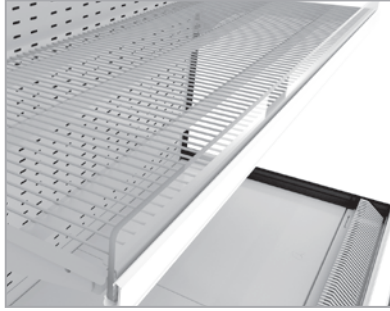
HFC: R407A / R407F / R134a / R404A • HFC/HFO: R448A / R449A / R452A / R450A
CO₂: R744 • GLYCOL/WATER: R718



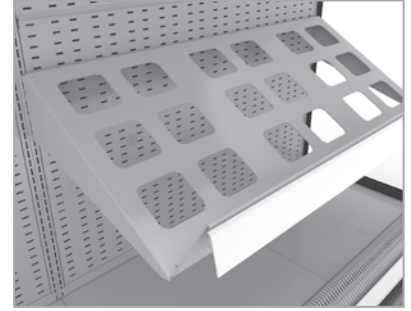
ACCESSORIES



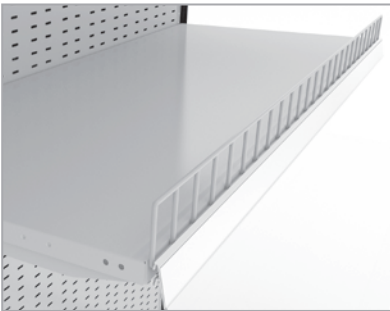
SOLID SHELF



WIRE SHELF



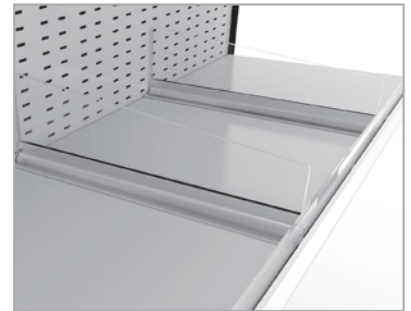
RACK SHELF



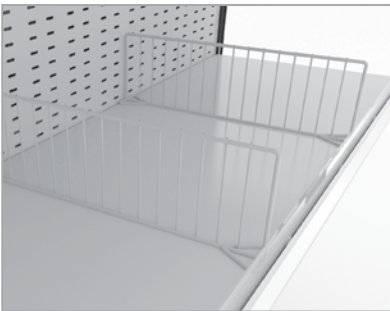
WIRE SHELF RISER



PLEXI SHELF RISER



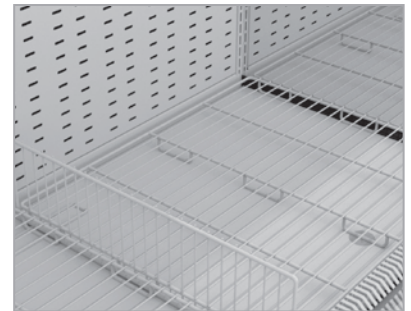
PLEXI PRODUCT DIVIDER



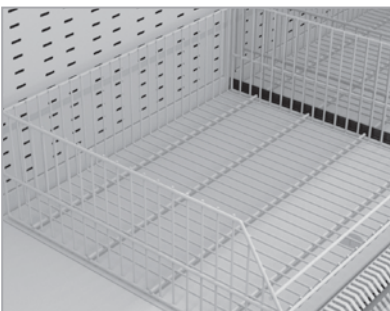
WIRE PRODUCT DIVIDER



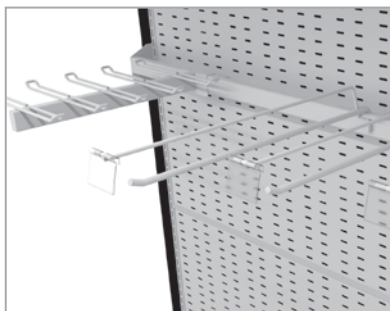
SHELF LIGHTING



WIRE BASE TRAY
WIRE BASE PRODUCT DIVIDER



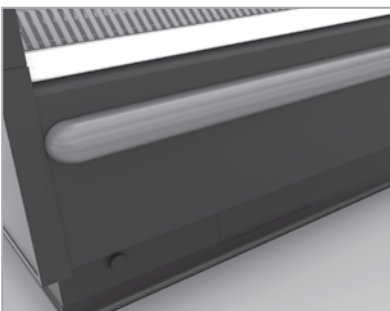
WIRE BASKET



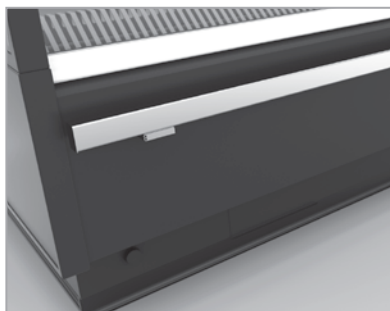
HOOK BAR



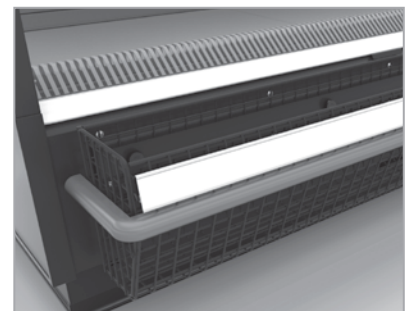
CABINET UPSTAND



PLASTIC BUMPRAIL



STAINLESS STEEL BUMPRAIL



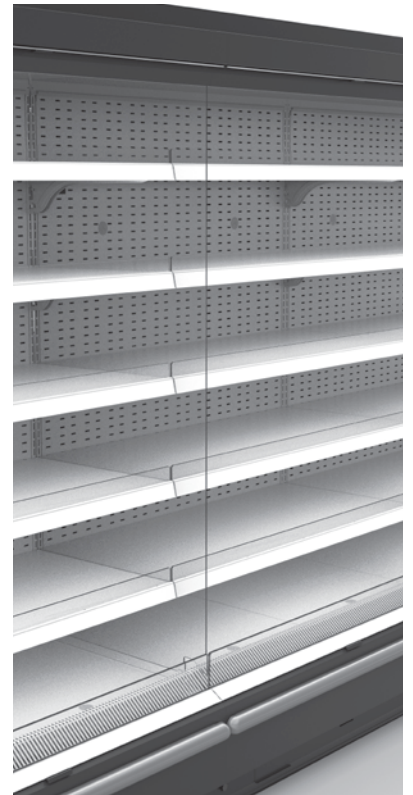
BASE FRONT CRISP BASKET



NIGHT BLIND



MIRROR (FV & MT)



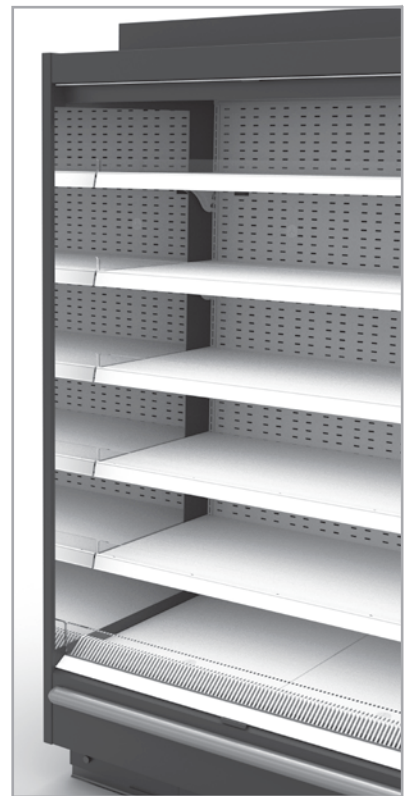
ACRYLIC SYSTEM DIVIDE



PANOROMIC SIDE PANEL



INTERMEDIATE SIDE PANEL



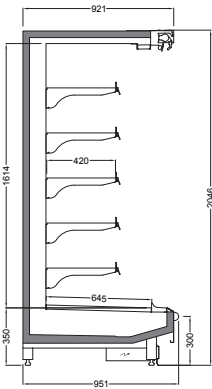
MIRRORED SIDE PANEL



TECHNICAL DATA

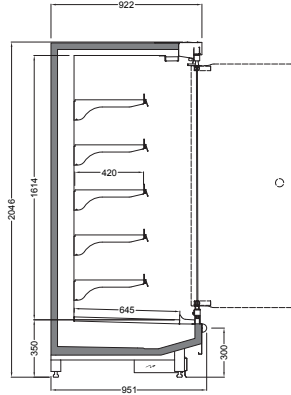
HEIGHT 2050

DEPTH 950



ONIX V3 2050 / 950

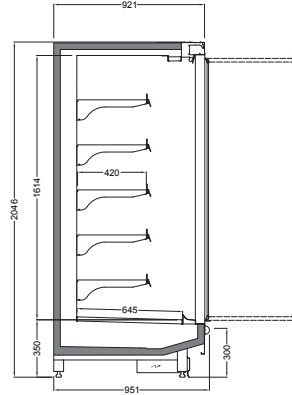
Length mm | 1250 | 1875 | 2500 | 2812,5 | 3125 | 3750 | 2136 (HC)



With Single Glass Doors

ONIX V3 2050 / 950

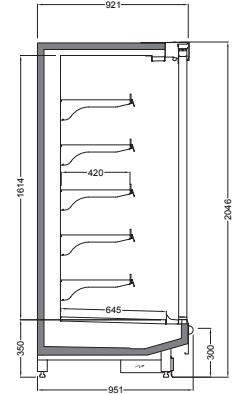
Length mm | 1250 | 1875 | 2500 | 2812,5 | 3125 | 3750 | 2136 (HC)



With Double Glass Doors

ONIX V3 2050 / 950

Length mm | 1250 | 1875 | 2500 | 2812,5 | 3125 | 3750 | 2136 (HC)

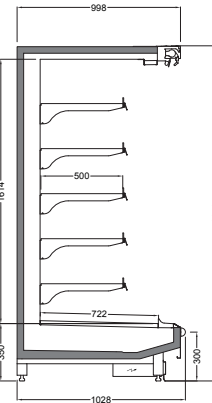


With Double Glass Sliding Doors

ONIX V3 2050 / 950

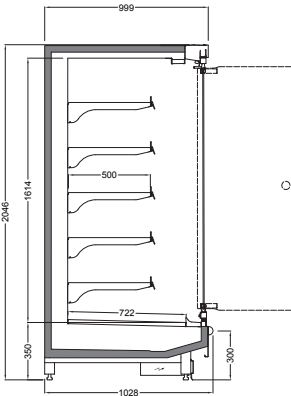
Length mm | 1250 | 1875 | 2500 | 2812,5 | 3125 | 3750 | 2136 (HC)

DEPTH 1020



ONIX V3 2050 / 1020

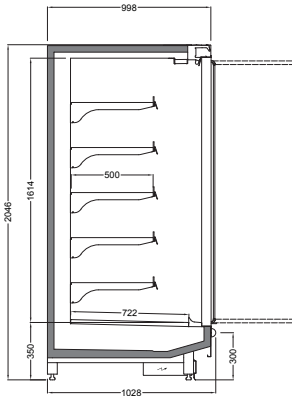
Length mm | 1250 | 1875 | 2500 | 2812,5 | 3125 | 3750 | 2136 (HC)



With Single Glass Doors

ONIX V3 2050 / 1020

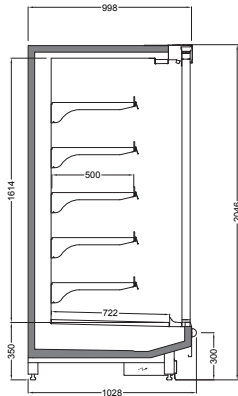
Length mm | 1250 | 1875 | 2500 | 2812,5 | 3125 | 3750 | 2136 (HC)



With Double Glass Doors

ONIX V3 2050 / 1020

Length mm | 1250 | 1875 | 2500 | 2812,5 | 3125 | 3750 | 2136 (HC)

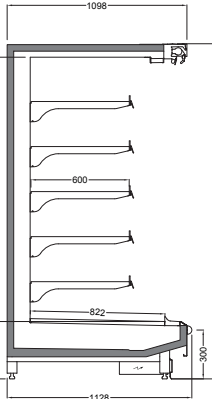


With Double Glass Sliding Doors

ONIX V3 2050 / 1020

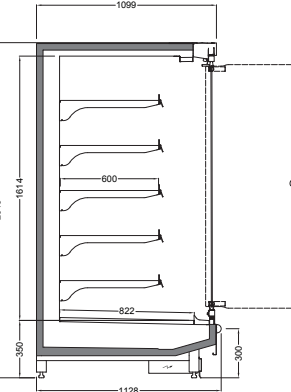
Length mm | 1250 | 1875 | 2500 | 2812,5 | 3125 | 3750 | 2136 (HC)

DEPTH 1120



ONIX V3 2050 / 1120

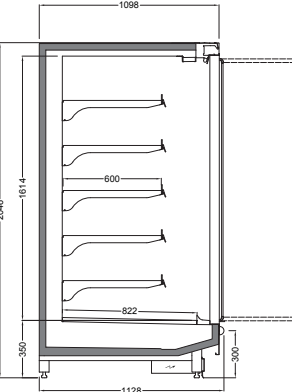
Length mm | 1250 | 1875 | 2500 | 2812,5 | 3125 | 3750



With Single Glass Doors

ONIX V3 2050 / 1120

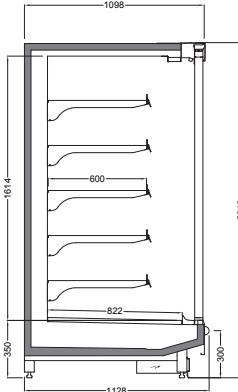
Length mm | 1250 | 1875 | 2500 | 2812,5 | 3125 | 3750



With Double Glass Doors

ONIX V3 2050 / 1120

Length mm | 1250 | 1875 | 2500 | 2812,5 | 3125 | 3750



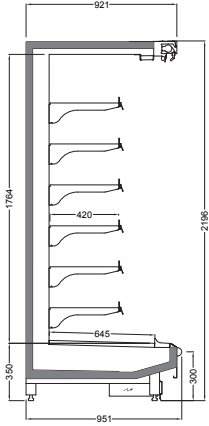
With Double Glass Sliding Doors

ONIX V3 2050 / 1120

Length mm | 1250 | 1875 | 2500 | 2812,5 | 3125 | 3750

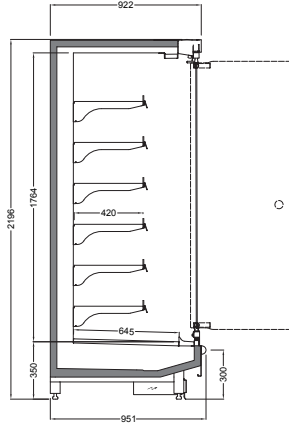
HEIGHT 2200

DEPTH 950



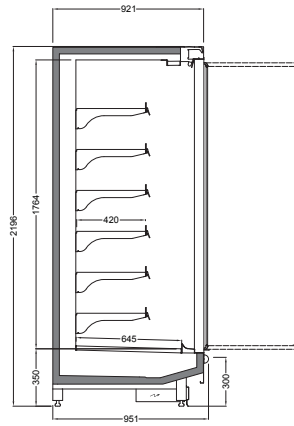
ONIX V3 2200 / 950

Length mm | 1250 | 1875 | 2500 | 2812,5 | 3125
3750 | 2136 (HC)



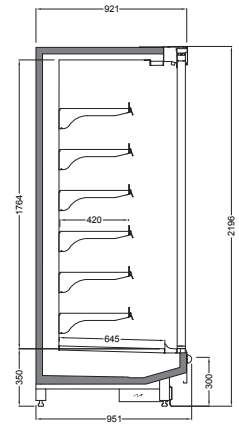
With Single Glass Doors

Length mm | 1250 | 1875 | 2500 | 2812,5 | 3125
3750 | 2136 (HC)



With Double Glass Doors

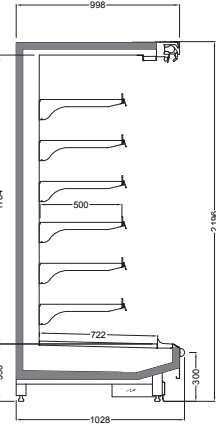
Length mm | 1250 | 1875 | 2500 | 2812,5 | 3125
3750 | 2136 (HC)



With Double Glass Sliding Doors

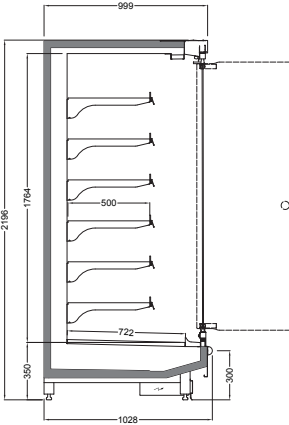
Length mm | 1250 | 1875 | 2500 | 2812,5 | 3125
3750 | 2136 (HC)

DEPTH 1020



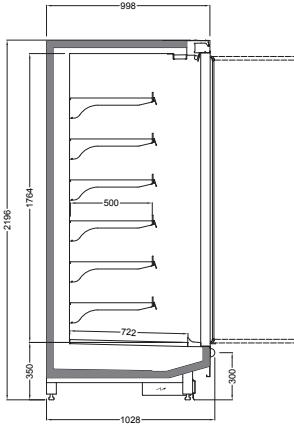
ONIX V3 2200 / 1020

Length mm | 1250 | 1875 | 2500 | 2812,5 | 3125
3750 | 2136 (HC)



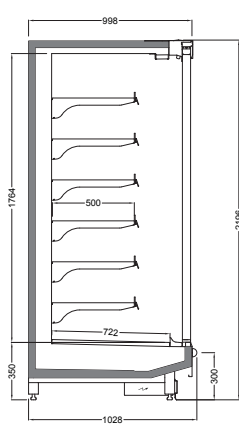
With Single Glass Doors

Length mm | 1250 | 1875 | 2500 | 2812,5 | 3125
3750 | 2136 (HC)



With Double Glass Doors

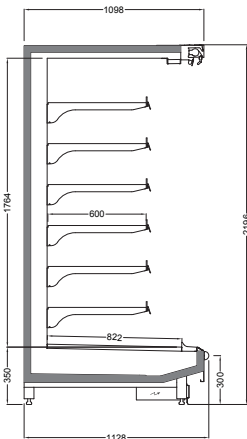
Length mm | 1250 | 1875 | 2500 | 2812,5 | 3125
3750 | 2136 (HC)



With Double Glass Sliding Doors

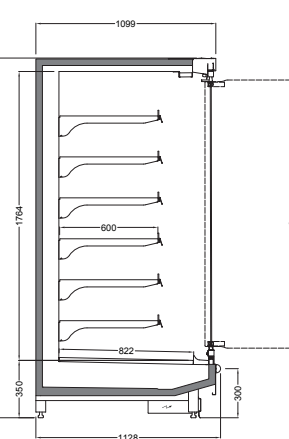
Length mm | 1250 | 1875 | 2500 | 2812,5 | 3125
3750 | 2136 (HC)

DEPTH 1120



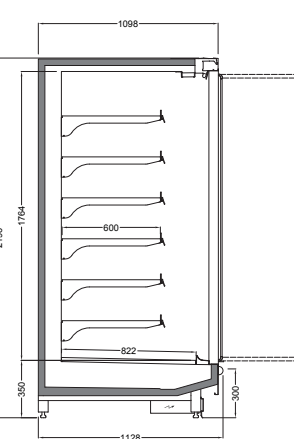
ONIX V3 2200 / 1120

Length mm | 1250 | 1875 | 2500 | 2812,5 | 3125
3750



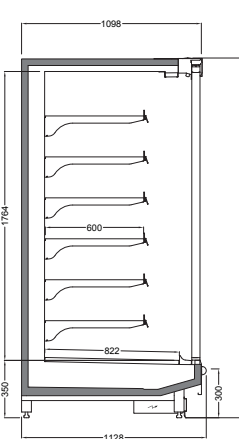
With Single Glass Doors

Length mm | 1250 | 1875 | 2500 | 2812,5 | 3125
3750



With Double Glass Doors

Length mm | 1250 | 1875 | 2500 | 2812,5 | 3125
3750

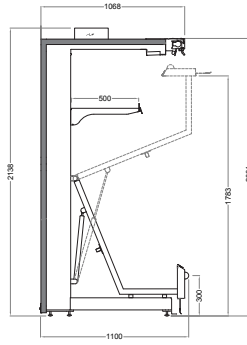


With Double Glass Sliding Doors

Length mm | 1250 | 1875 | 2500 | 2812,5 | 3125
3750

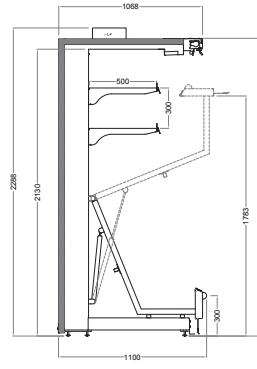


TECHNICAL DATA



ONIX V3 2050 LIFT UP

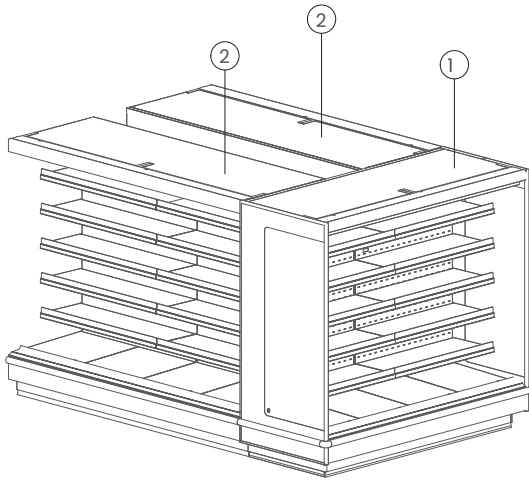
Length mm | 1250 | 1875 | 2500 | 3750



ONIX V3 2200 LIFT UP

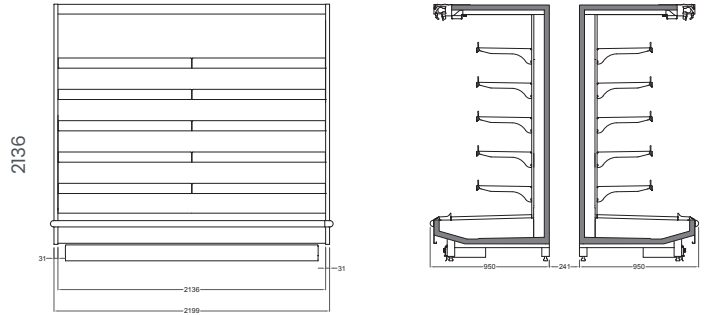
Length mm | 1250 | 1875 | 2500 | 3750

ISLAND CONFIGURATION

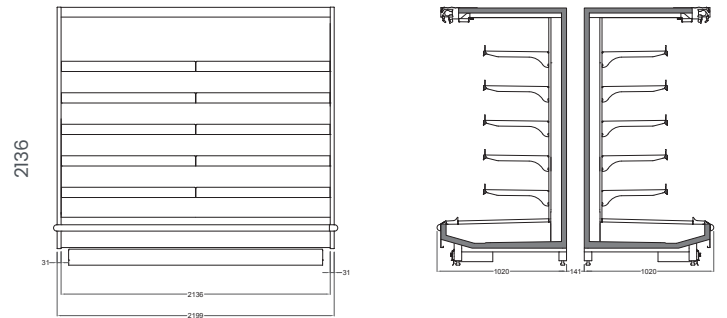


① END CASE

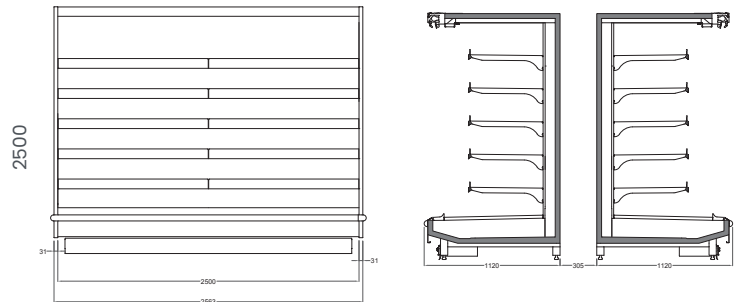
② RUN CASE



If Onix V3 950 run cabinets are positioned back to back



If Onix V3 950 / 1020 run cabinets are positioned back to back



If Onix V3 1120 run cabinets are positioned back to back